



MARIA CRISTINA DE NICOLÒ

VISUAL DEVELOPMENT AND ILLUSTRATION

PORTFOLIO 2021

TWO

The

Kingdoms

*The Two
Kingdoms*



Once upon a time, there were two reigns, opposite as the Light and the Dark, and in perpetual war to each other.

The ghosts of the warriors who fell in battle threw a curse: the two kingdoms would be divided forever. Only the Golden hour, when Sun gives way to Moon in the sky, would have been free them from the spell.

The son and the daughter of the Kings of the two Kingdoms met in the woods during that hour and fell in love. But their love was a dangerous secret.

Cover propositions

THE TWO KINGDOMS

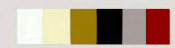
MARIA CRISTINA DE NICOLÒ mcristina.denicolo@libero.it

Prince Yarima

Yarima is the prince of the Woestyn Kingdom.
He, like all people of his kind, has bones coming out of his body that represent his place in the hierarchy of his reign.
The Woestyn people are ferocious hunters that live in a desertic and volcanic land, for this reason, when the night comes or they are in a dark place, their hair release light, to illuminate the places around and to keep dangerous creatures away from them.
At sunrise he turns into a wolf because of a curse that ghosts placed on him and his people.

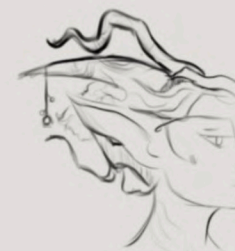


Expressions



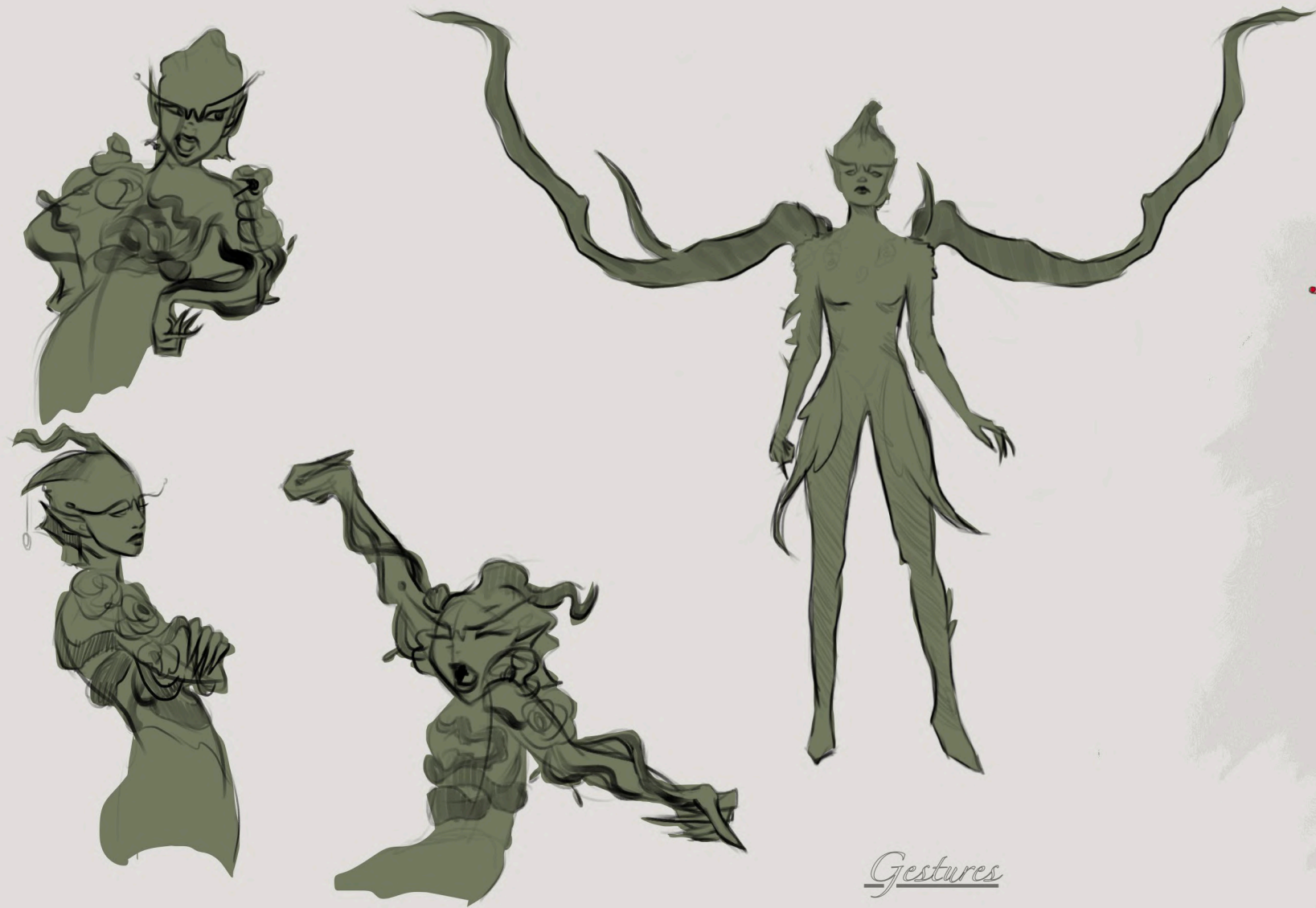


Princess Atéa



Head explorations

Atéa is the princess of the Tanai's Kingdom. She is partially a plant, like all the people in her reign and she can change part of her branches and flowers based on her emotions or necessities. At sunset she turns into an eagle because of a curse that ghosts placed on her and her people.



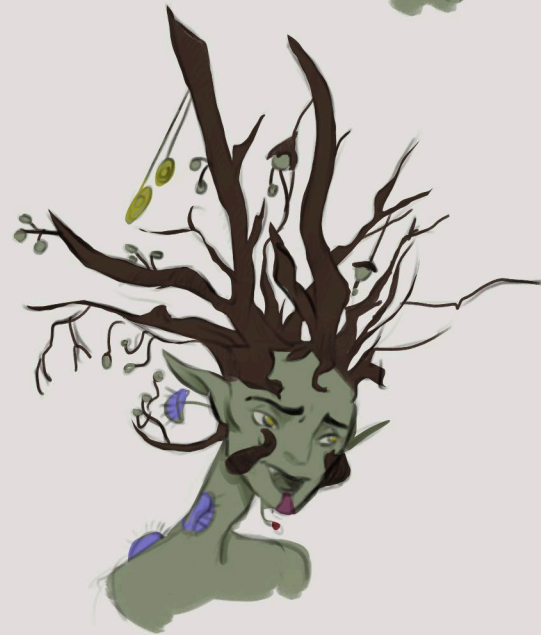
Expressions



Gestures

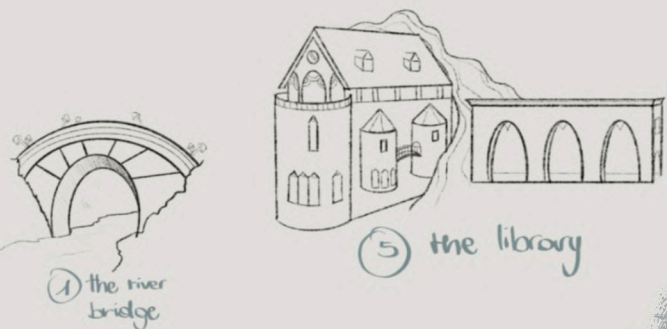
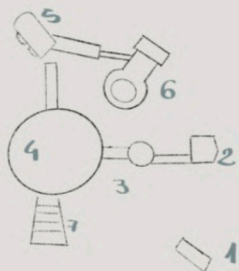
THE TWO KINGDOMS

Batai the Evil counsellor



Batai is the counsellor of the Tanai's royal family. He grew up full of anger towards every habitant of the Woestyn reign because he lost his family during the war when he was still really young. From that moment Batai grew up trying to gain power in order to protect himself. Even if older than her, Batai started to develop feelings for Atéa, and when he found out her relationship with the Woestyn Prince, he went crazy with jealousy and, with a trick, he killed him.

Princess Atea's Castle

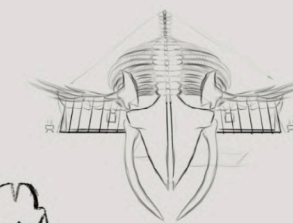


The Tanai's people are deeply bounded with nature, particularly with trees and vegetation. They live in the deepest and darkest spot of the forest, in a sacred place where giant mushrooms and enormous trees have given them a home. The Tanai's people are deeply bounded with nature, particularly with trees and vegetation. They live in the deepest and darkest spot of the forest, in a sacred place where giant mushrooms and enormous trees have given them a home.



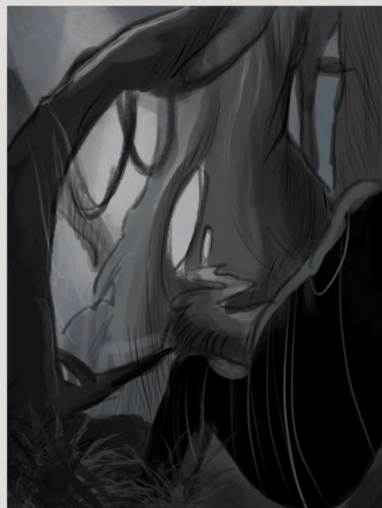
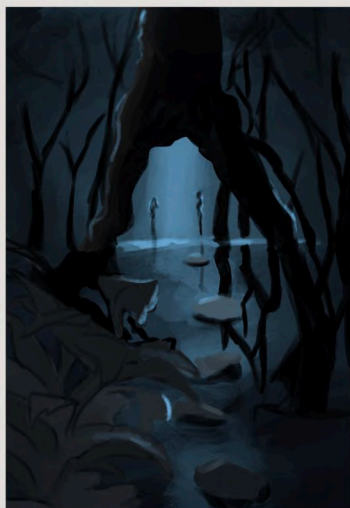


Prince Varima's Castle



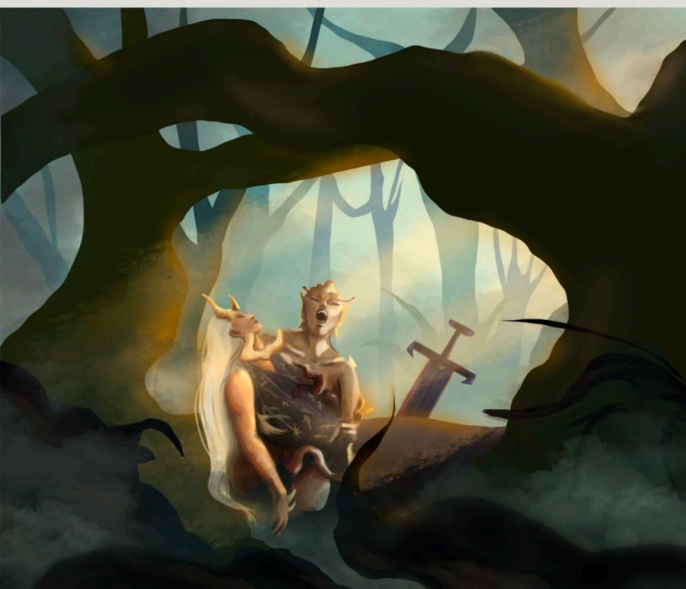
The Woestyn people are fierce and proud hunters from the desertic lands. They learned to survive in a merciless territory and this made them brave and ruthless on the battlefield. They use the bones and the furs of the creatures they've defeated to build their homes where they usually spend their nights dancing and drinking.

MARIA CRISTINA DE NICOLÒ mcristina.denicolo@libero.it



The Graveyard Stone is a holy place where the spirits of the dead warriors can rest. Thanks to this magical stone the spirits can communicate with the people of the two reigns and they can still habit their world.

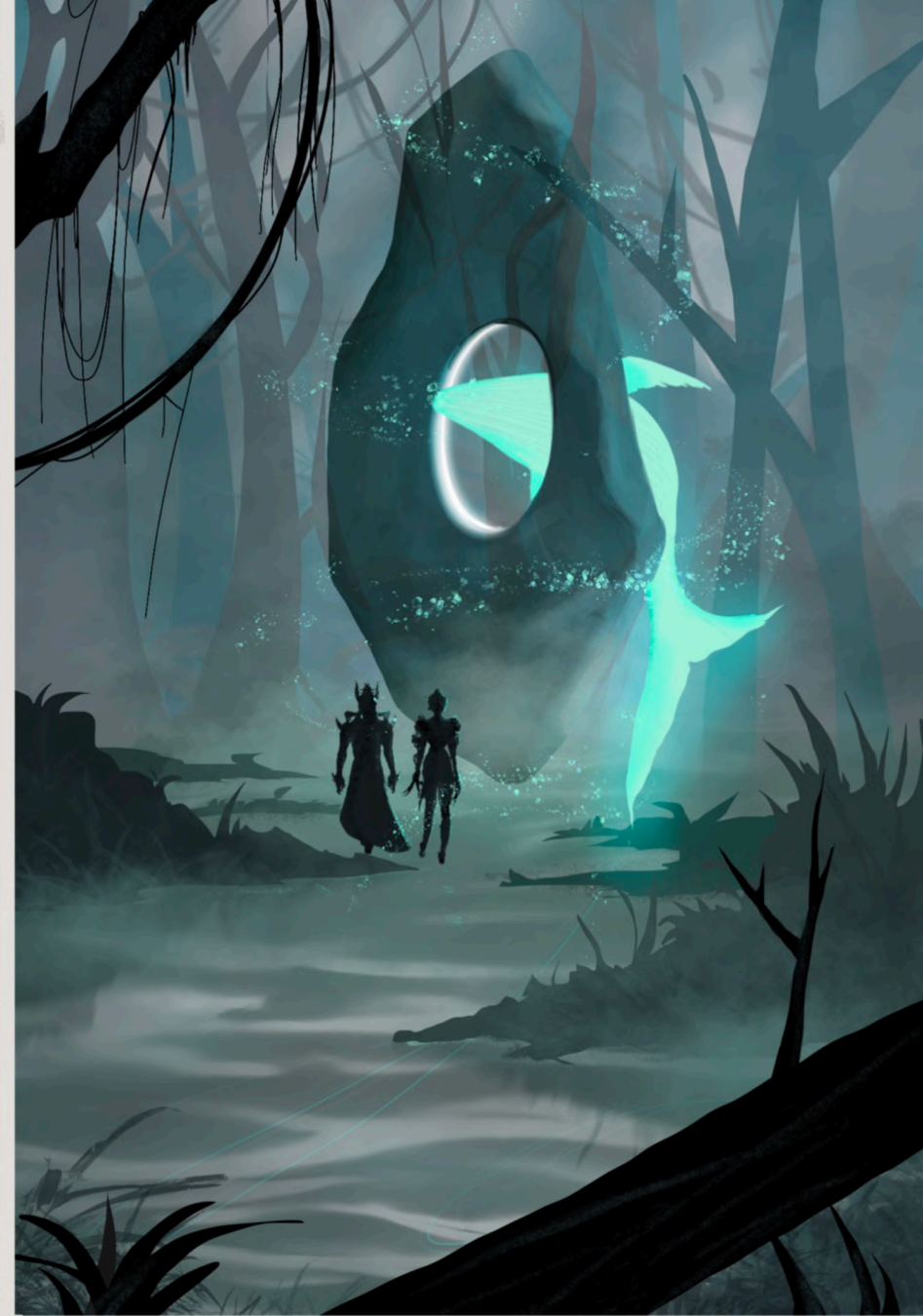
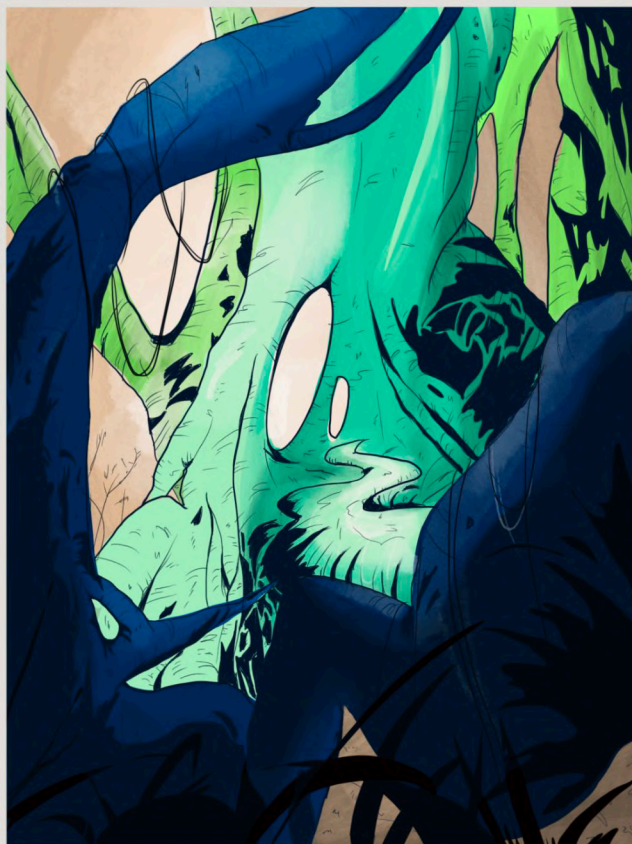
Key frames & Environments



Atéa finds Yarima dead and she's destroyed by the pain.

It's the Golden Hour, the only time Yarima and Atea can be together in their true form. In a moment, before turning into an eagle, she takes her own life.

THE TWO KINGDOMS



LO CHIAMAVANO TRINITÀ

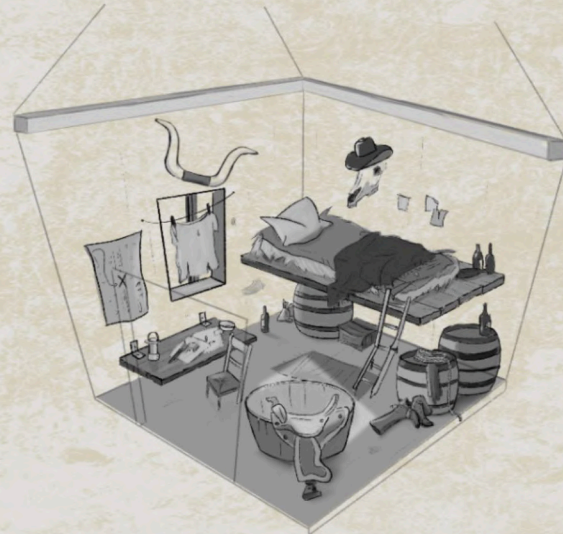
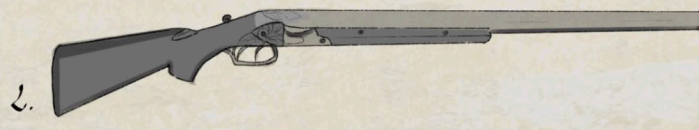
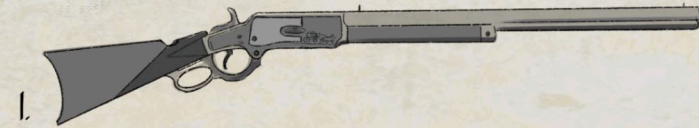
~Redesign project



Characters Lineup



Props

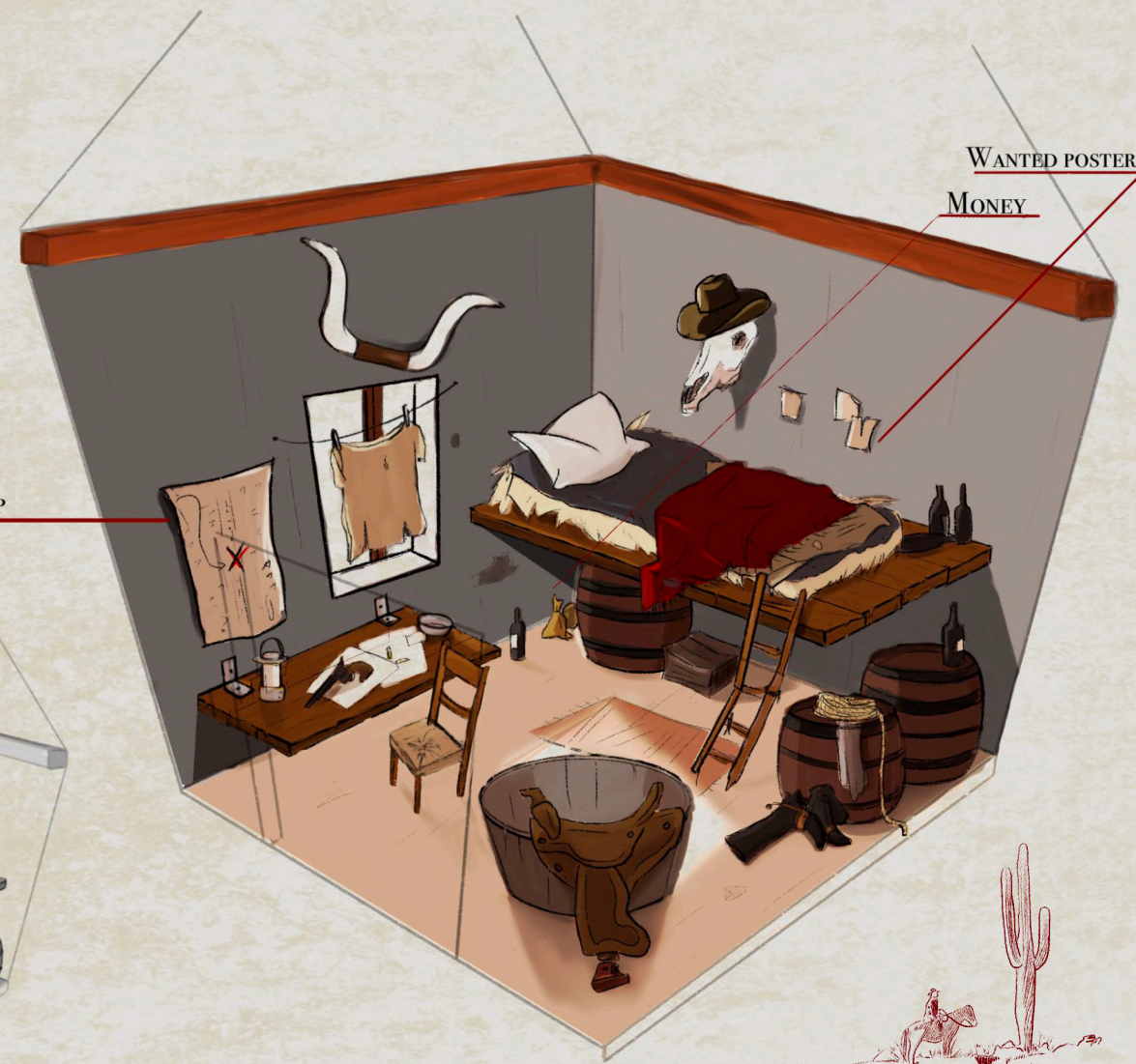


Trinitá room

RAILWAY MAP

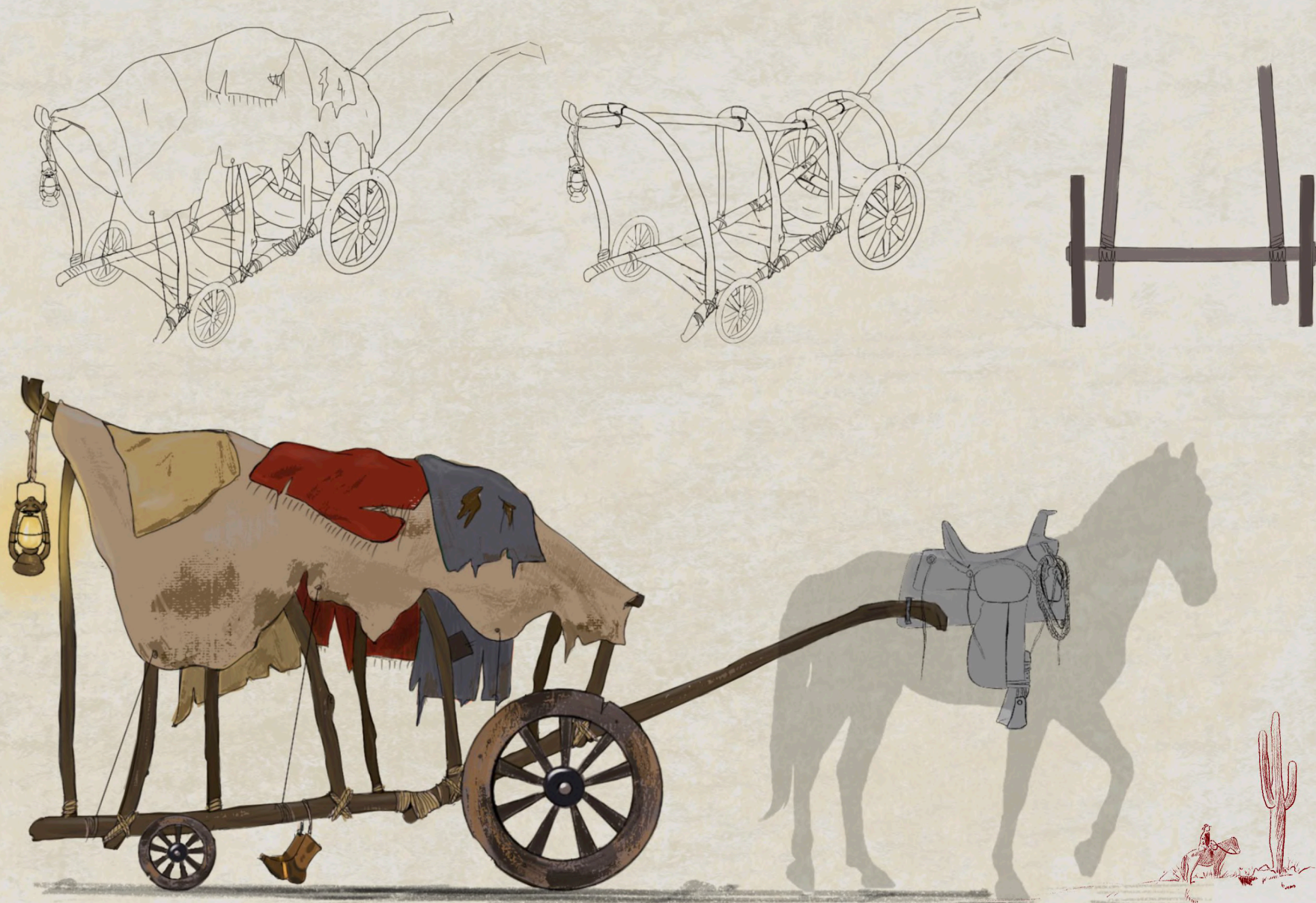
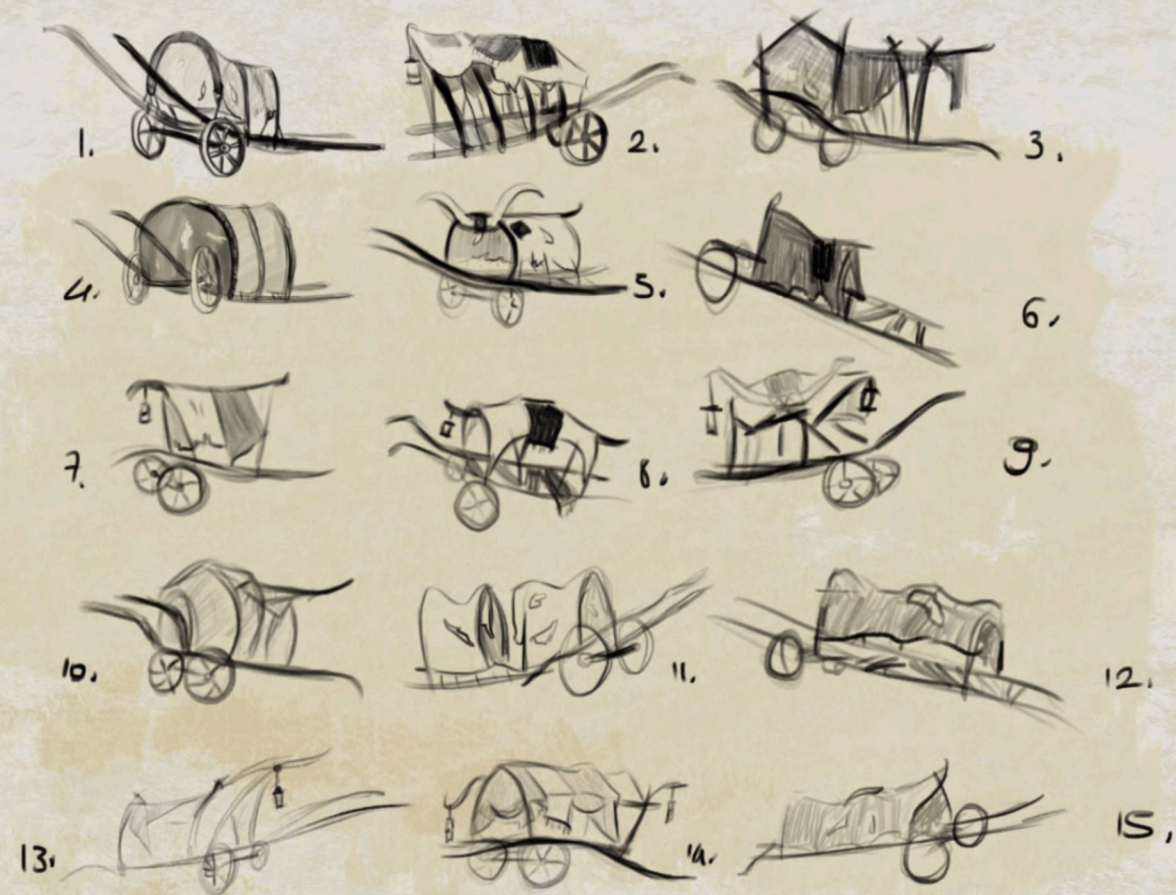
WANTED POSTERS

MONEY



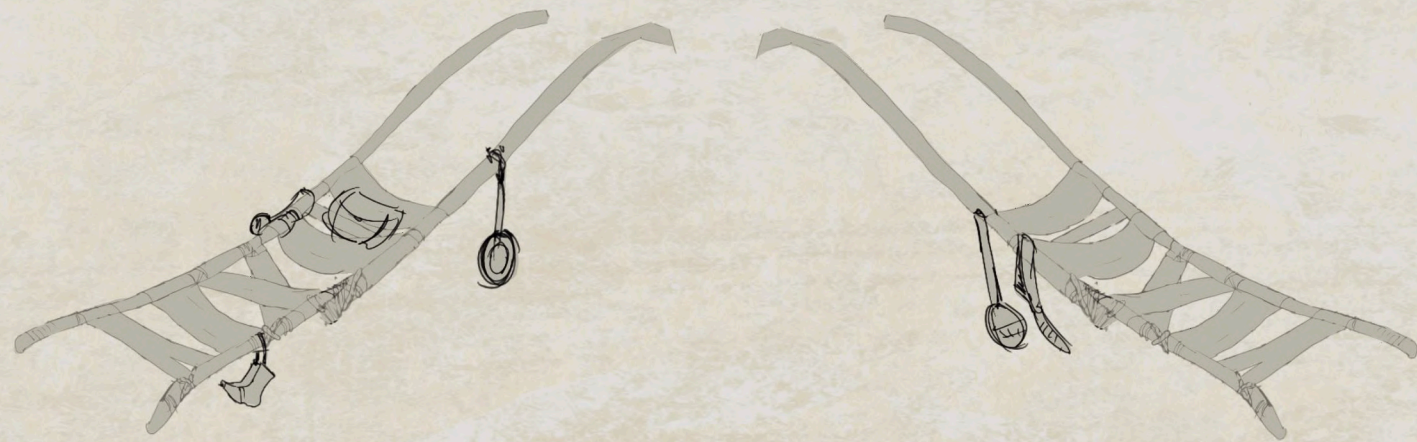
Props

Trinità wagon bed ~ exploration

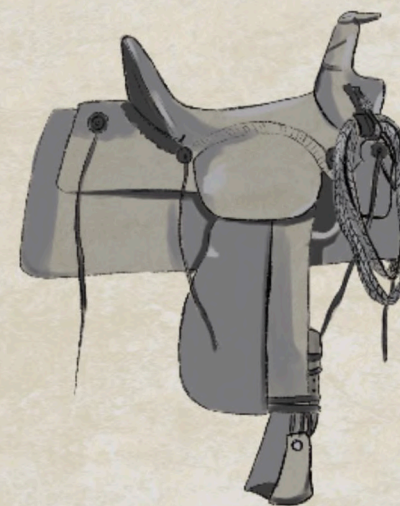
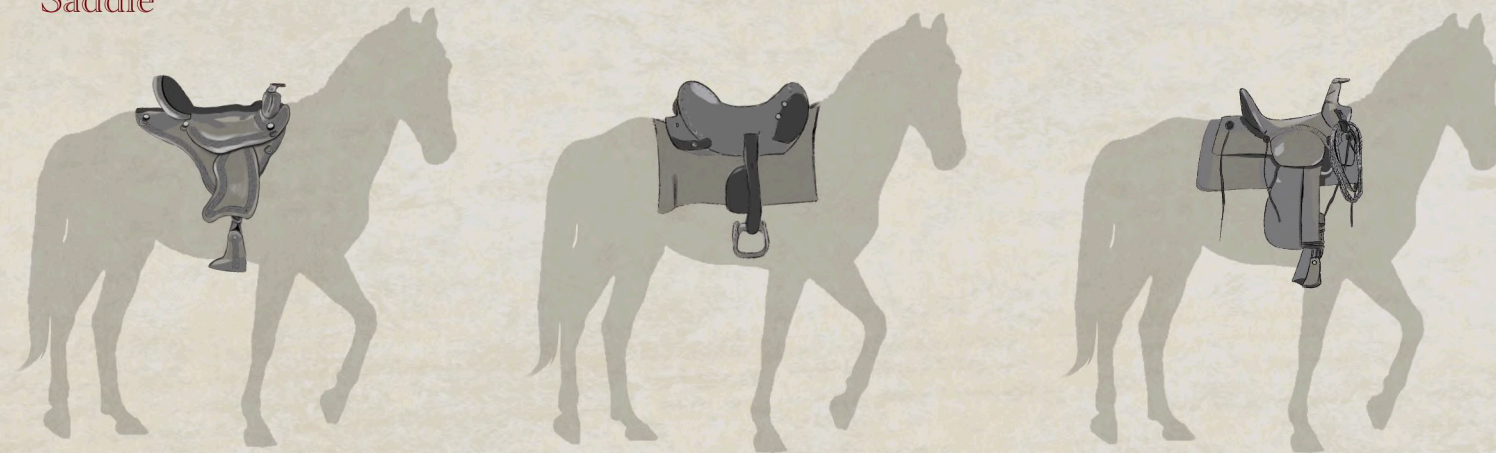


Props

Trinità wagon bed



Saddle



Props



1.



4.



7.



8.



2.



6.



5.



9.



3.



11.



10.



12.



1.



2.



3.



4.

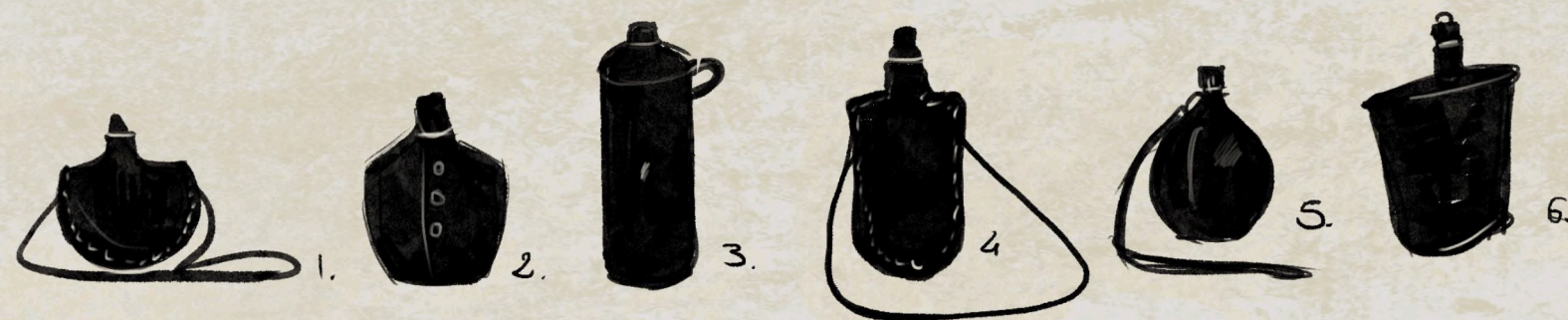
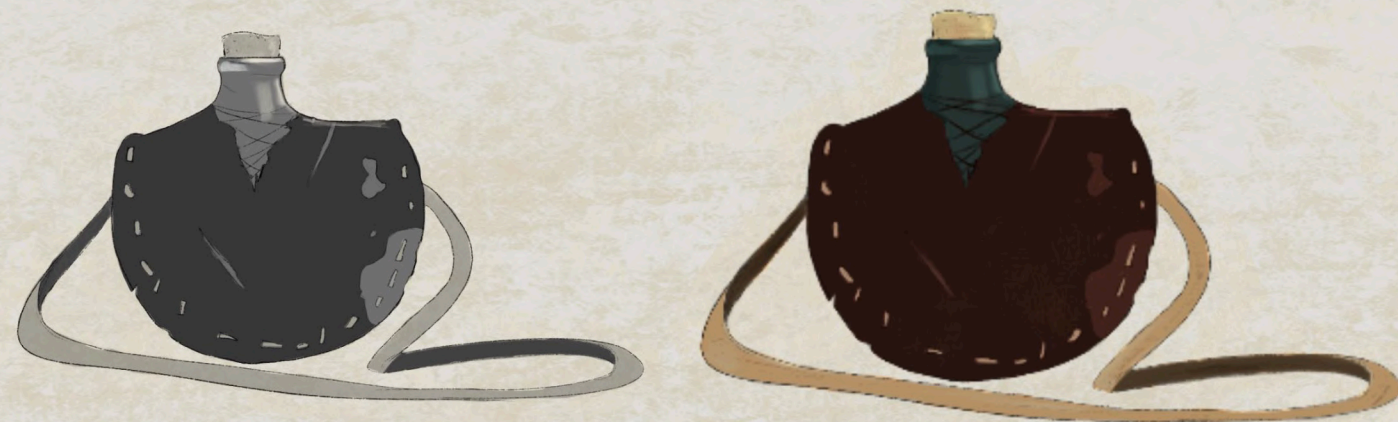


6.

5.

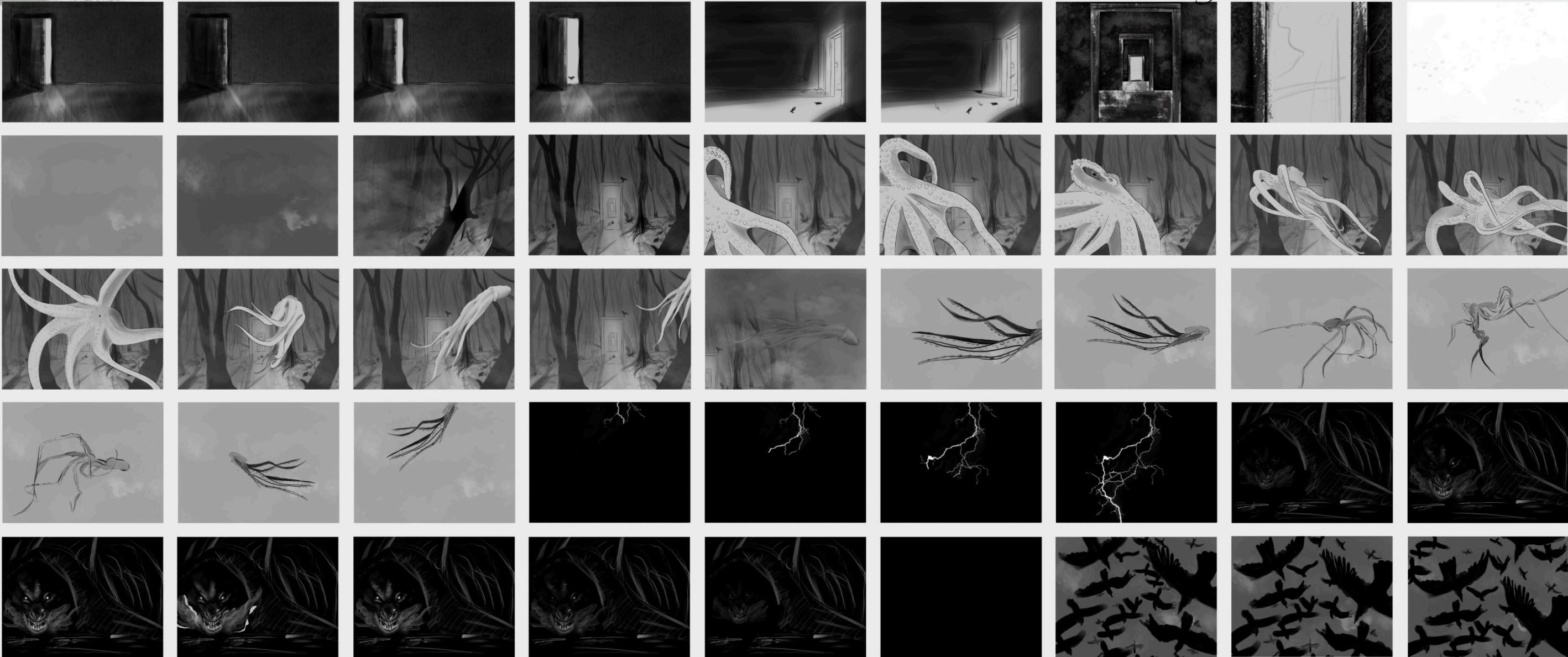


Props



Storyboards

Link for the video: https://youtu.be/zfudYN_Cx1E



LILA

&

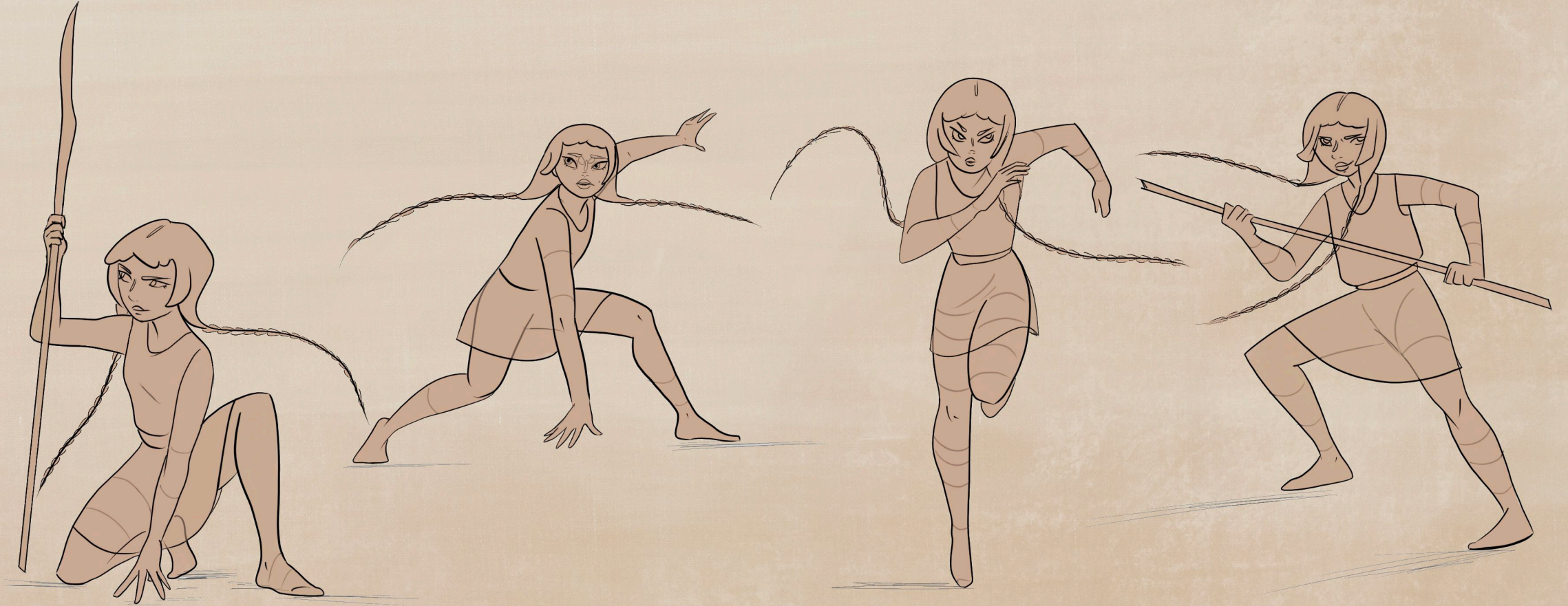
THE CRIMSON EGG

Village of Inti, year of the Black Sun. Amazon forest.
The mystical Crimson Egg, protected by the village, was
stolen from the Metzli Shadows and brought in the
darkest spot of the Amazon forest.
Lila has to cross the jungle and defeat the Metzli
Accolites to bring the Crimson Egg back to her village
and avoid the destruction of her world.

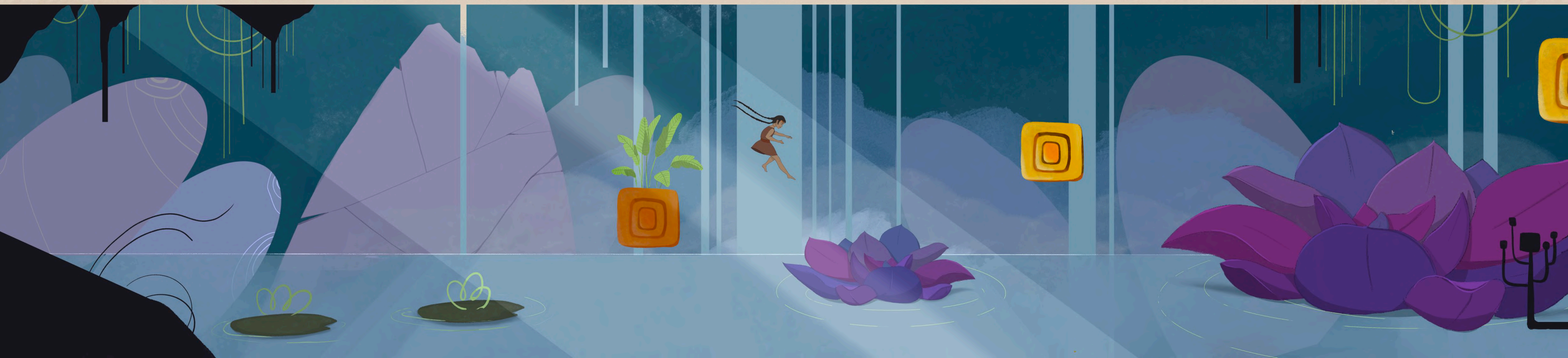
Acuecucyoticihuati
-Pacific Ocean

Chalchiubtlicue
-Atlantic Ocean



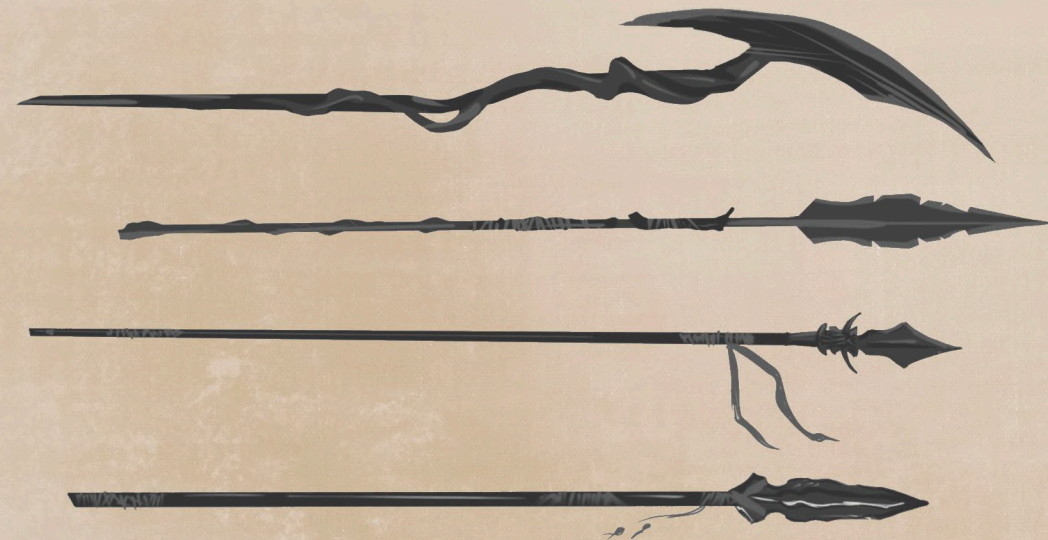


Level 1: The Waterfalls





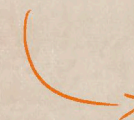
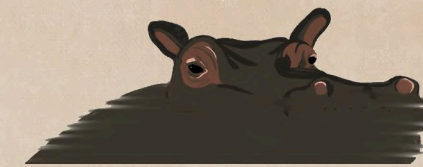
Weapons proposition



3

2

1



Level 2: The Swamp



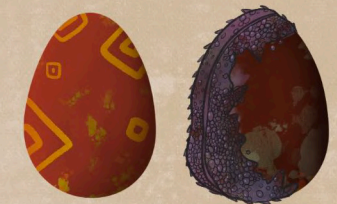
Enemies propositions



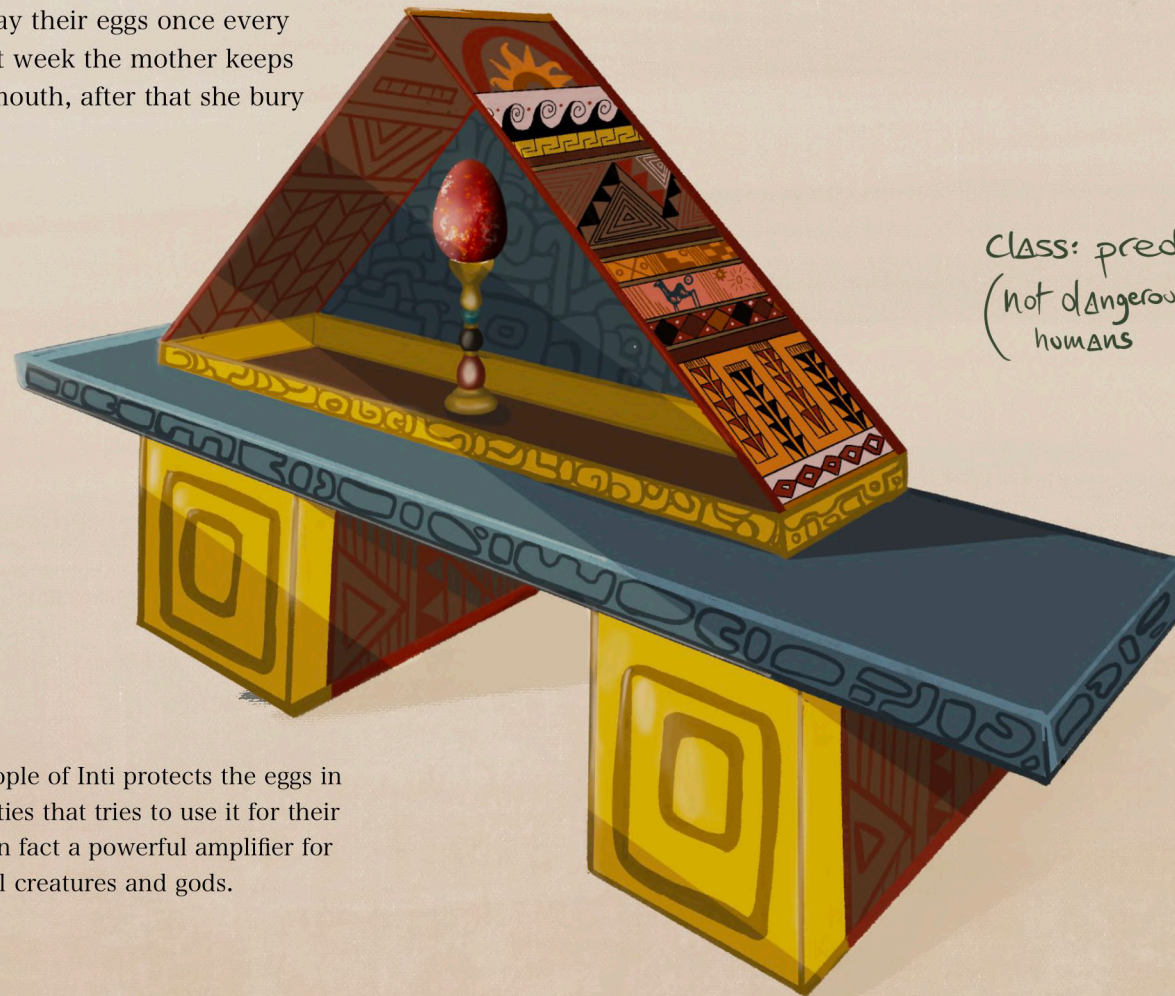
Level 3: The Jungle



The kukulkan creatures lay their eggs once every twenty years. For the first week the mother keeps the egg in a sack in her mouth, after that she bury it underground.



For centuries now, the people of Inti protects the eggs in their village from evil entities that tries to use it for their benefits. The egg shell is in fact a powerful amplifier for the powers of supernatural creatures and gods.



Kukulkan
female

Class: predator
(not dangerous for
humans)

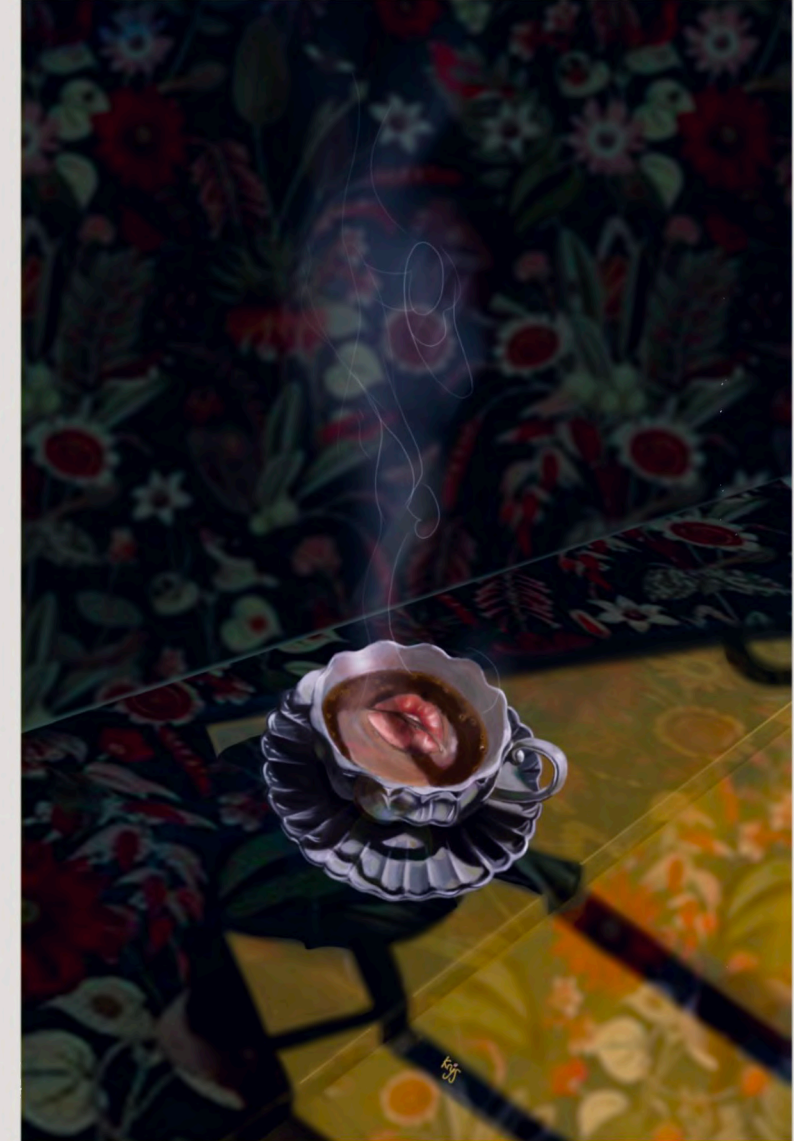
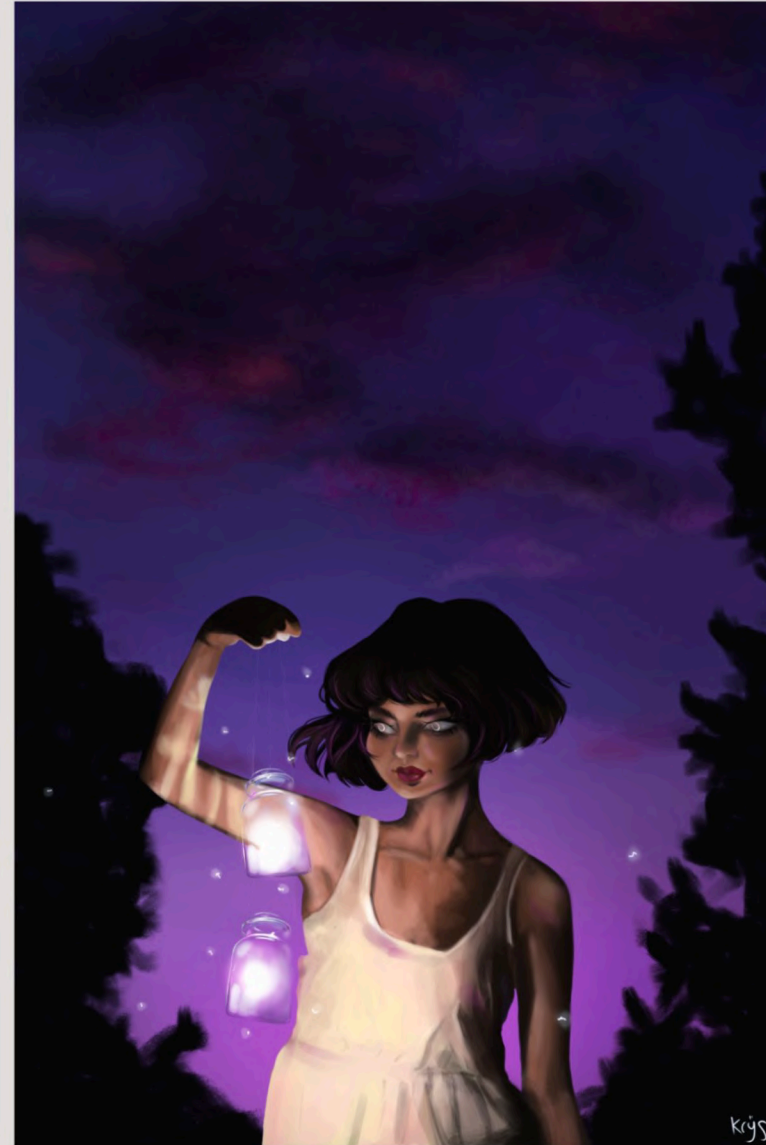


The wings support her while she jumps (Not fit to fly)

length: 30 cm



Illustrations and Other characters



Illustrations and Other characters

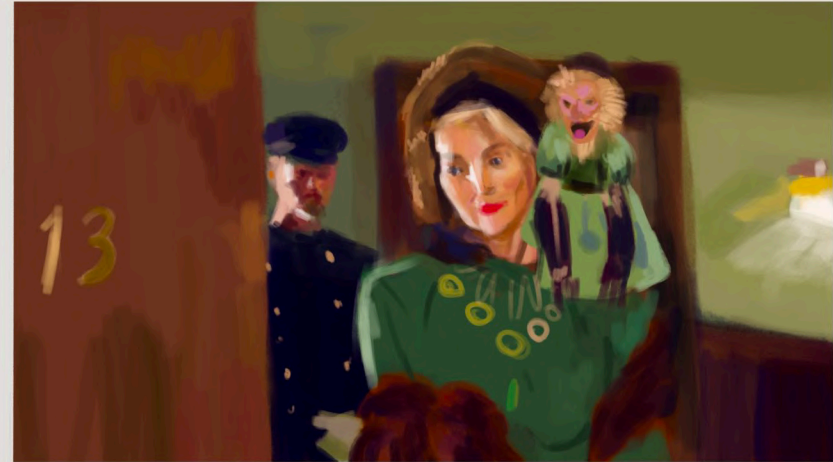
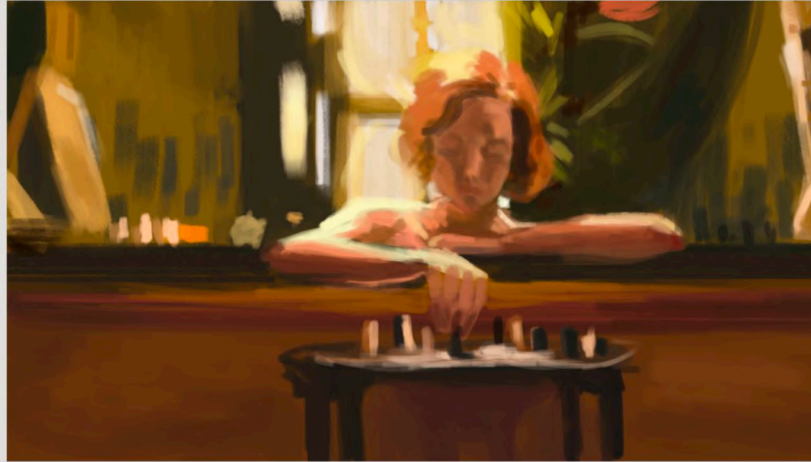




Illustrations and Other characters

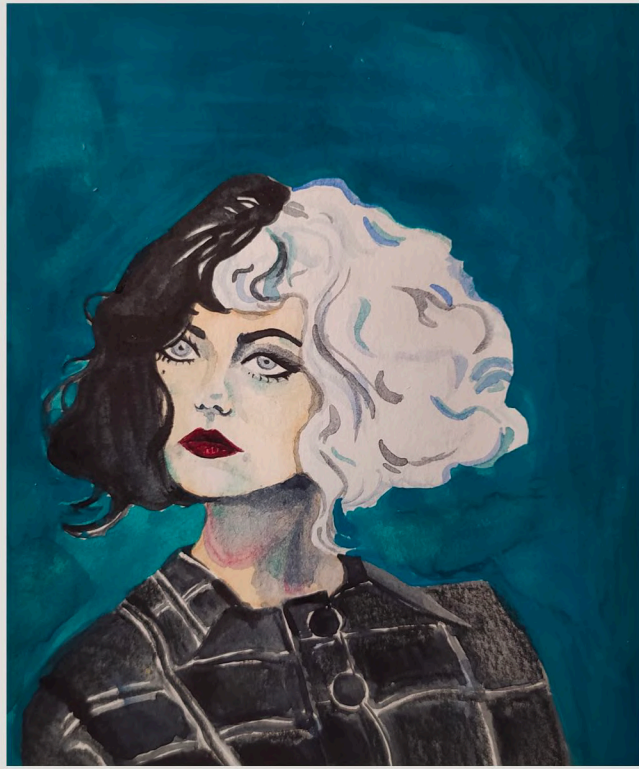


Studies



Studies

Watercolour

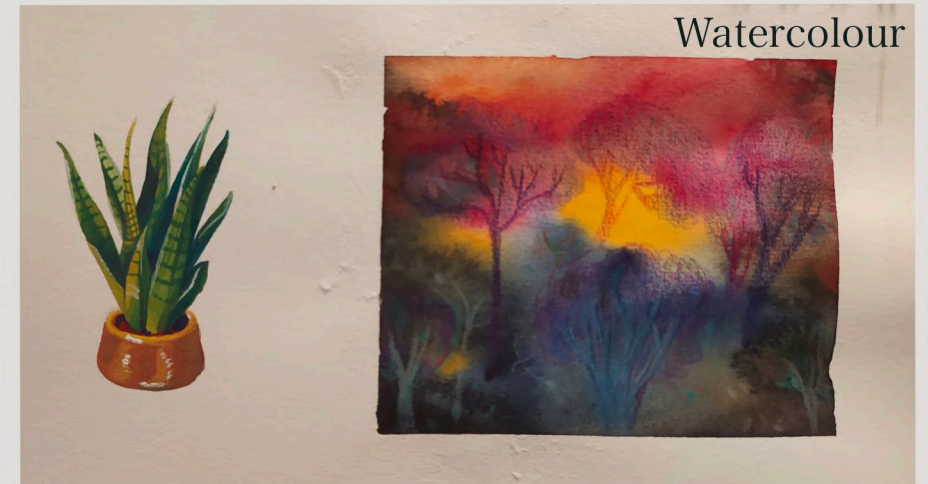


Watercolour



Gouache

Gouache



Watercolour

Gouache



RESUME

Education

Master in Visual Development

Fundamentals in Visual Development

IDEA Academy, Rome

University Degree- Painting

Fine Art Academy, Foggia

Skills

Other domains

Illustration, Traditional painting (Watercolour, Graphite, ink, gouache, oil, acrylics)

Digital media

Adobe Photoshop, Procreate

Languages

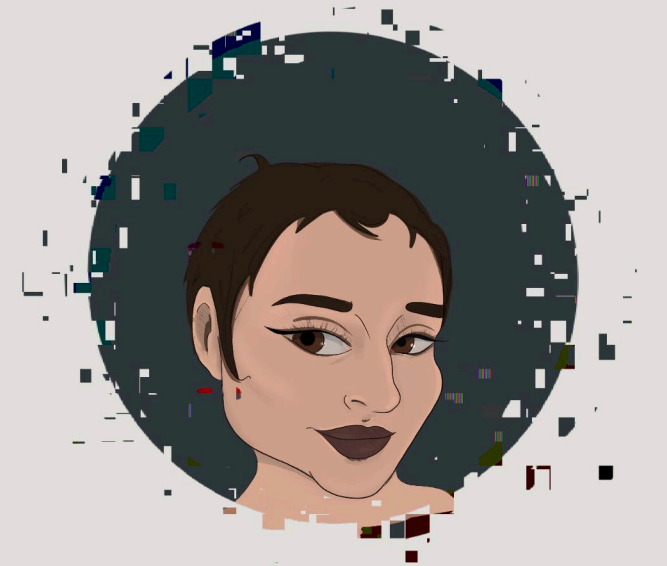
Italian, English

Contacts

mcristina.denicolo@libero.it 

krys.artstation.com 

krys_963 



*Thank you for
looking!*

