



Adina Ziebart

Visual Development Portfolio

2021

Adina Ziebart
visual development artist

Education

Visual Development Master Level 1
October 2020 - June 2021
IDEA Academy

Illustration BDes (Hons)
September 2016 – July 2019
University of Dundee

Art & Design General Foundation Course
August 2015 – December 2015
Zurich University of the Arts (ZHdK)

adina.ziebart@gmail.com / adinaziebart.com

Skills

Programs

Photoshop, Illustrator, InDesign, Premiere
elementary knowledge of AE and ZBrush

Traditional Media

graphite, coloured pencils, ink, water colour, acrylics

Languages

fluent in German and English, Italian (C1), French (B1)





White Gold

When Ana Sofia's father is lying in his death bed, she promises to take over his merchant business which is about to go belly up. She sets out to China with her ship where she discovers porcelain. She makes a risky decision which not only saves her business but starts a porcelain craze in the whole of Europe.

White Gold
CHARACTER STUDIES



White Gold

CHARACTER



1.



2.



3.



4.



5.

Ana Sofia Fernandes

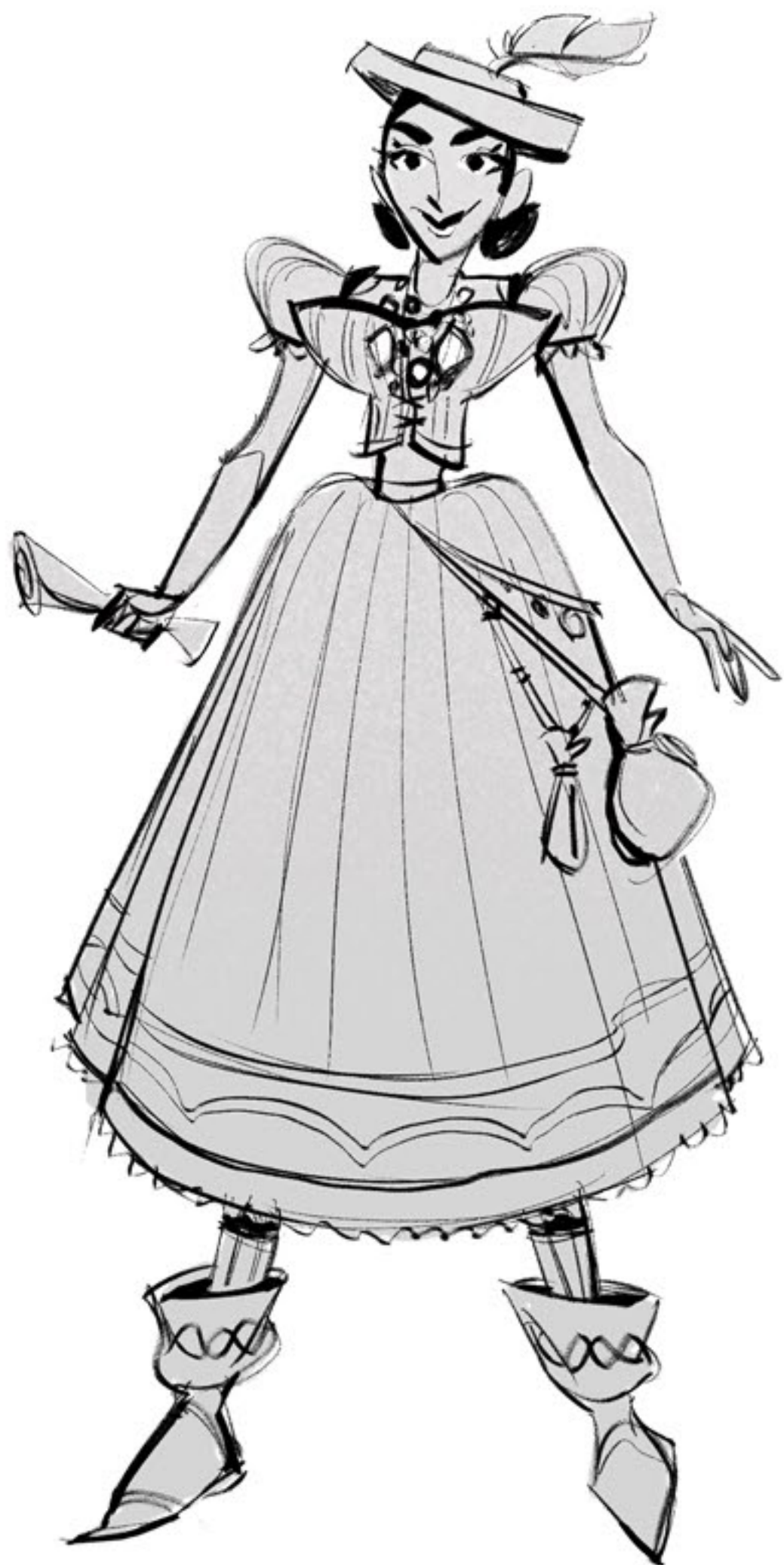
Is a merchant explorer who travels the world to find the best and newest products to bring back home with her ship. She discovers porcelain in China and the product is a massive hit in her home country which earns her a lot of money.

She is adventurous, feisty, a good dealer, can stand her ground and likes pretty things.



White Gold

TURNAROUND AND EXPRESSIONS



White Gold

POSES



White Gold
PROP DESIGNS



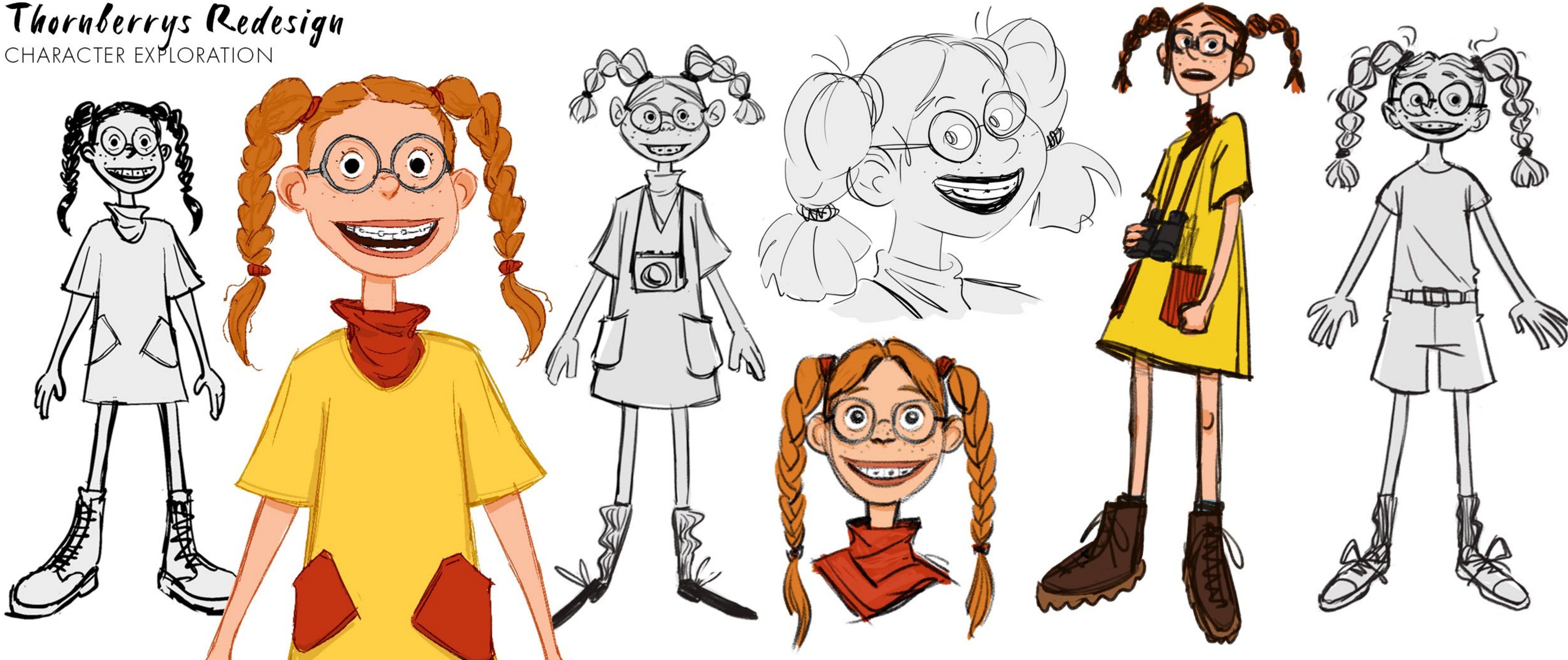


The WILD Thornberrys

A redesign project

Thornberrys Redesign

CHARACTER EXPLORATION



Thornberrys Redesign

ELIZA THORNBERRY



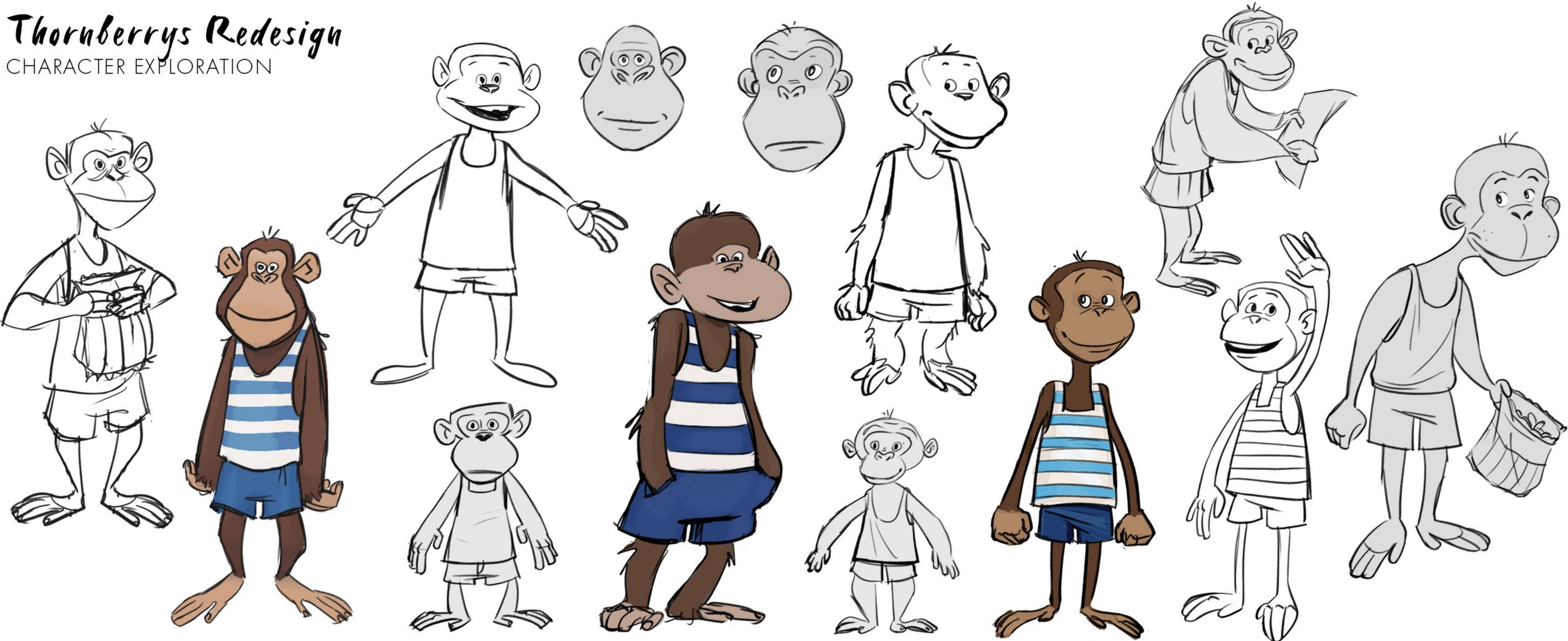
Eliza Thornberry

Eliza is the main protagonist of the series. She can talk to animals. This gift was given to her by a shaman after she had rescued him. Eliza is always curious and loves to go on adventures. She often puts herself in danger to save animals. She wears pigtails, glasses and braces and has freckles.



Thornberrys Redesign

CHARACTER EXPLORATION



Thornberrys Redesign

DARWIN THORNBERRY



Darwin Thornberry

Darwin is Eliza's best friend. He lived in the wild but became a Thornberry family member. He is a very cautious monkey and very much prefers the Comvee to the jungle. Darwin has adapted so much to living with humans that he prefers eating junk food over bananas. He wears blue shorts and a blue-white striped top that belonged to Debbie Thornberry.



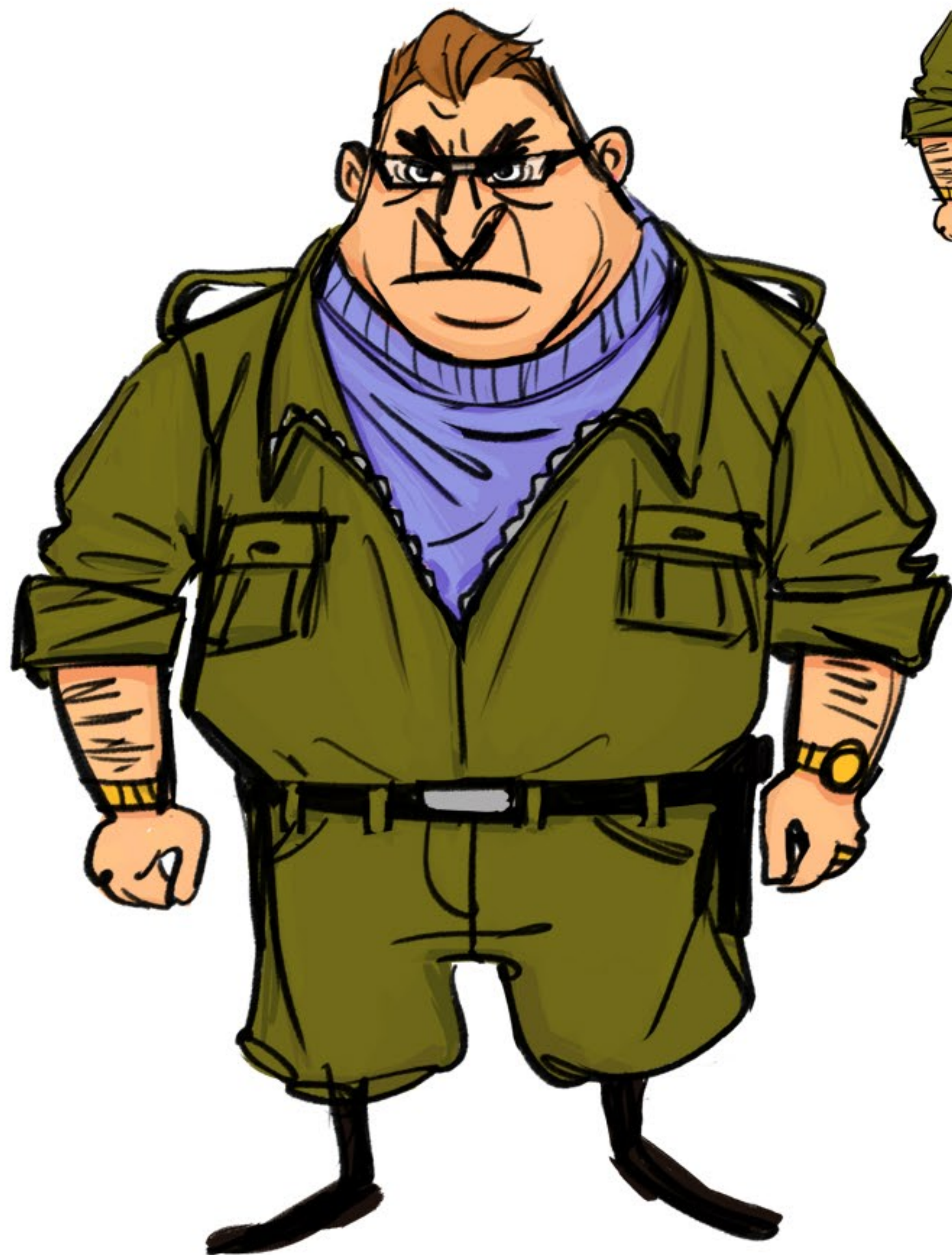
Thornberrys Redesign

CHARACTER EXPLORATION



Thornberrys Redesign

NEIL BIEDERMAN



Neil Biederman

Neil Biederman is an evil poacher who poaches and kidnaps animals with his friend Kip O'Donnell. They are the sworn enemies of Eliza Thornberry.

Biederman is a heavysset, short man who is not particularly smart.



Thornberrys Redesign

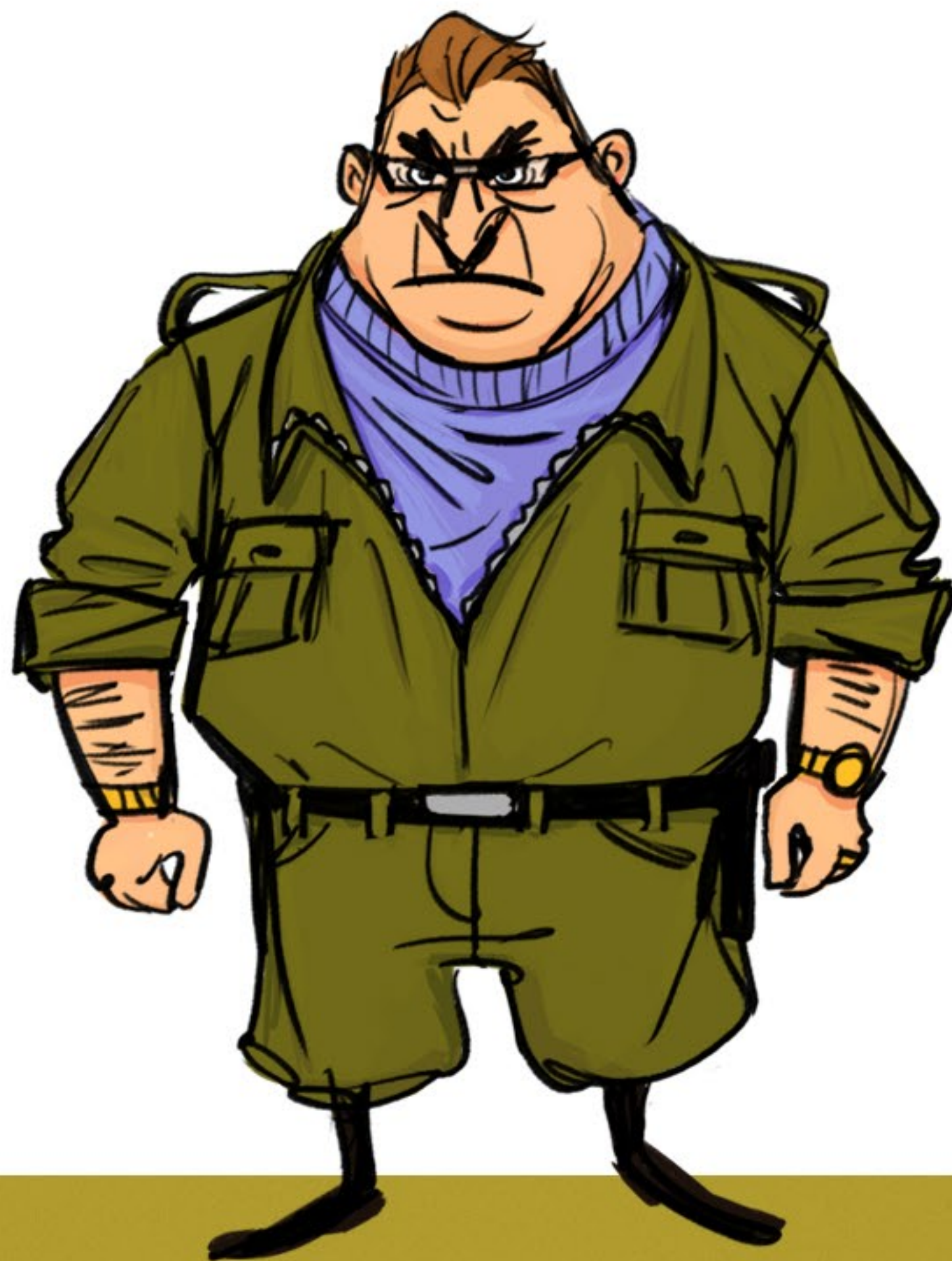
CHARACTER LINEUP



Eliza



Darwin



Neil



Kip

Thornberrys Redesign

ROOM AND PROPS



Thornberrys Redesign

STORY MOMENTS



Two Reigns

an ill-fated love story

A war that lasted as long as they remember. The prince and the princess from two enemy kingdoms meet by chance in the forest between the two reigns and immediately fall in love. They meet during the Golden Hour, the only hour that is free from the curse that was cast by the ghosts of the fallen soldiers. If they are on enemy territory after the sun has set they turn into animals: she into an eagle, him into a wolf.

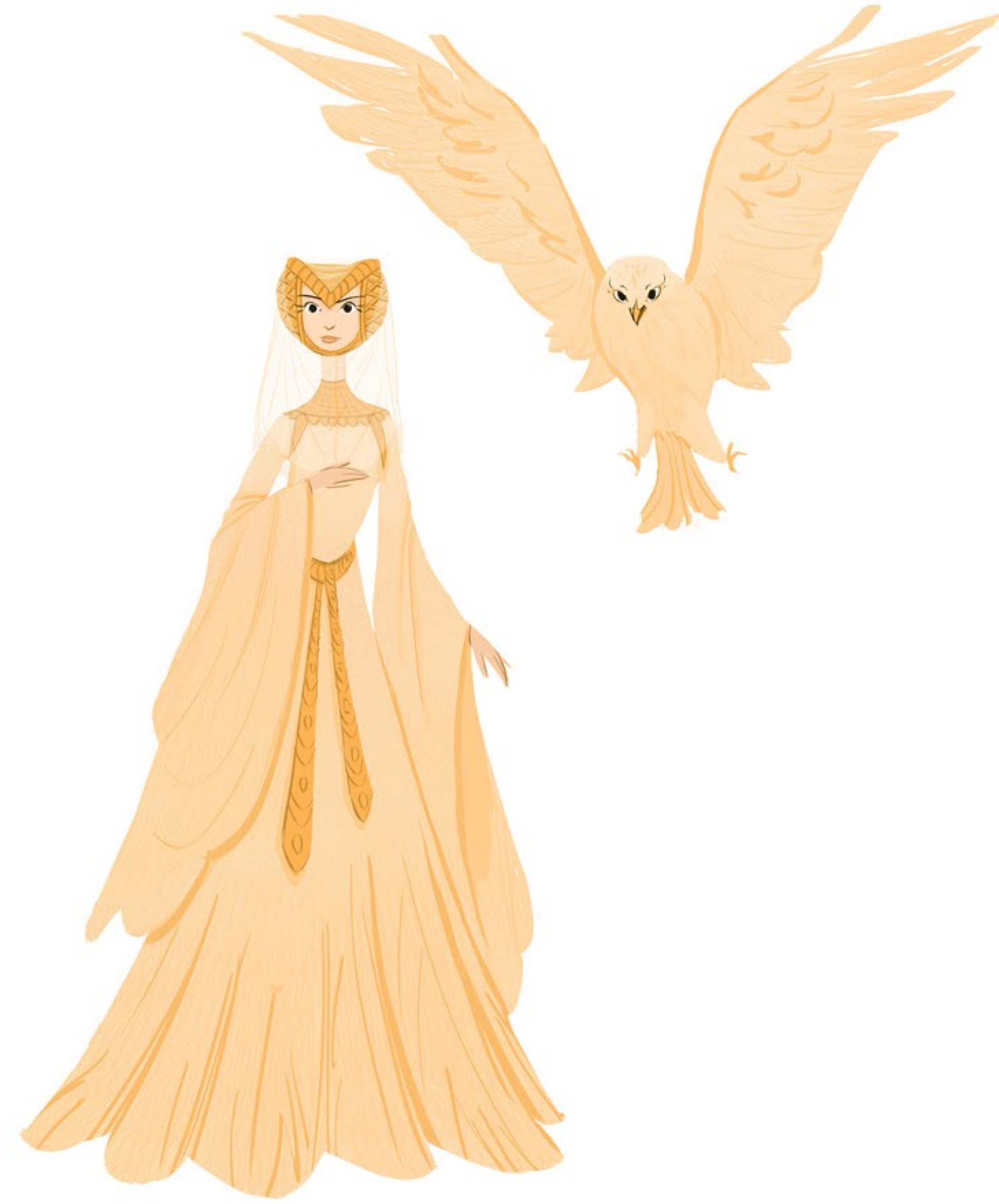
The two lovers set out to find a way to undo the curse but the Evil Advisor who desires the princess finds out about their plan...



Two Reigns
CHARACTER LINE UP



the Prince



the Princess



the Evil Advisor

The Little Match Girl

STORY ROUGHS





Thank you for looking!



@adinaziebart



@adinaziebart

adina.ziebart@gmail.com